

## Lab: Virtual Fish Dissection

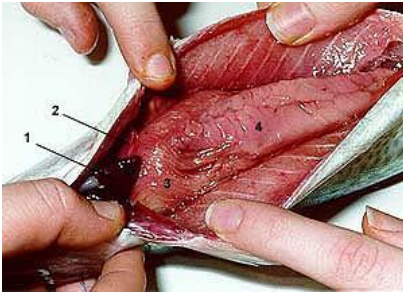
Directions: Using the following website as a starting point, answer the following questions.

<https://australianmuseum.net.au/learn/animals/fishes/blue-mackerel-scomber-australasicus-cuvier-1832/>

1. What is the scientific name of the Blue Mackerel (genus & species)?
2. Describe the Blue Mackerel.
3. How large do Blue Mackerel grow?
4. Blue Mackerel are clearly countershaded. Define “countershaded” (not given).

<https://australianmuseum.net.au/learn/animals/fishes/fish-dissections/>

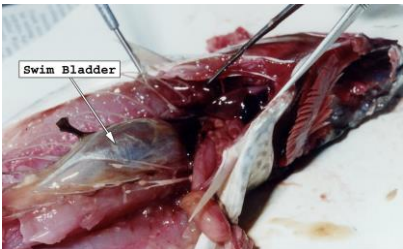
5. Label 1-4. (these are the same pictures and numbers as online)



6. Label 1-5. (these are the same pictures and numbers as online)

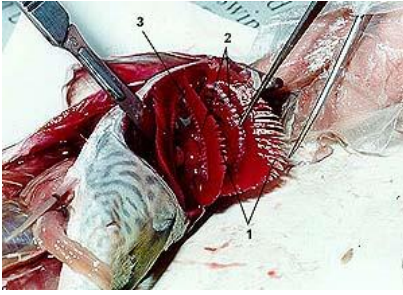


7. Describe what the swim bladder looks like.



8. What does the swim bladder do?

9. Label 1-3. (these are the same pictures and numbers as online)



10. What is another name for the gill filaments of bony fishes?

11. Compare the gill filaments of highly active and less active fishes.

<https://australianmuseum.net.au/learn/animals/fishes/fish-scales/>

12. Do all fish have scales?

13. Draw a sample placoid scale.

14. Draw a sample cosmoid scale.

15. Draw a sample ganoid scale.

16. Draw a sample cycloid scale.

17. How are scales used to determine the approximate age of a fish?

18. Give an example of a fish that has more than one type of scale.

<https://australianmuseum.net.au/learn/animals/fishes/parts-of-a-fish/>

19. Draw a fish and label the six major fins.